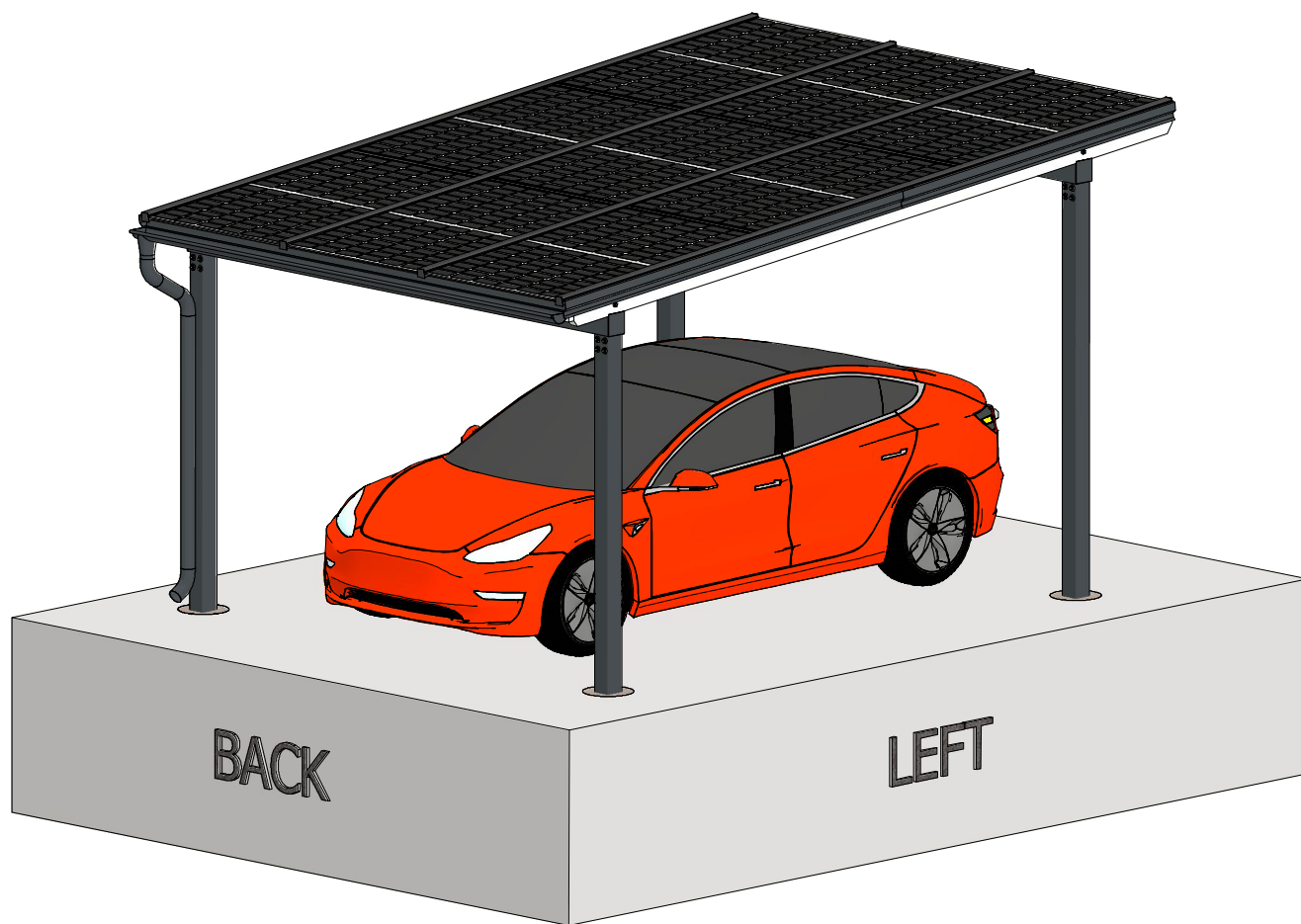


Carport "ePIT-H435-9BFT3-5-120"  
Steel-Glulam construction with an integrated solar power system

**Solar power capacity - 3,915 kWp**



Carport "ePIT-H435-9BFT3-5-120"  
(Dimensions: Width x Depth) 357x517 cm

**Solar power capacity - 3,915 kWp**

**Complete structure - 4876 Eur *excluding* VAT**

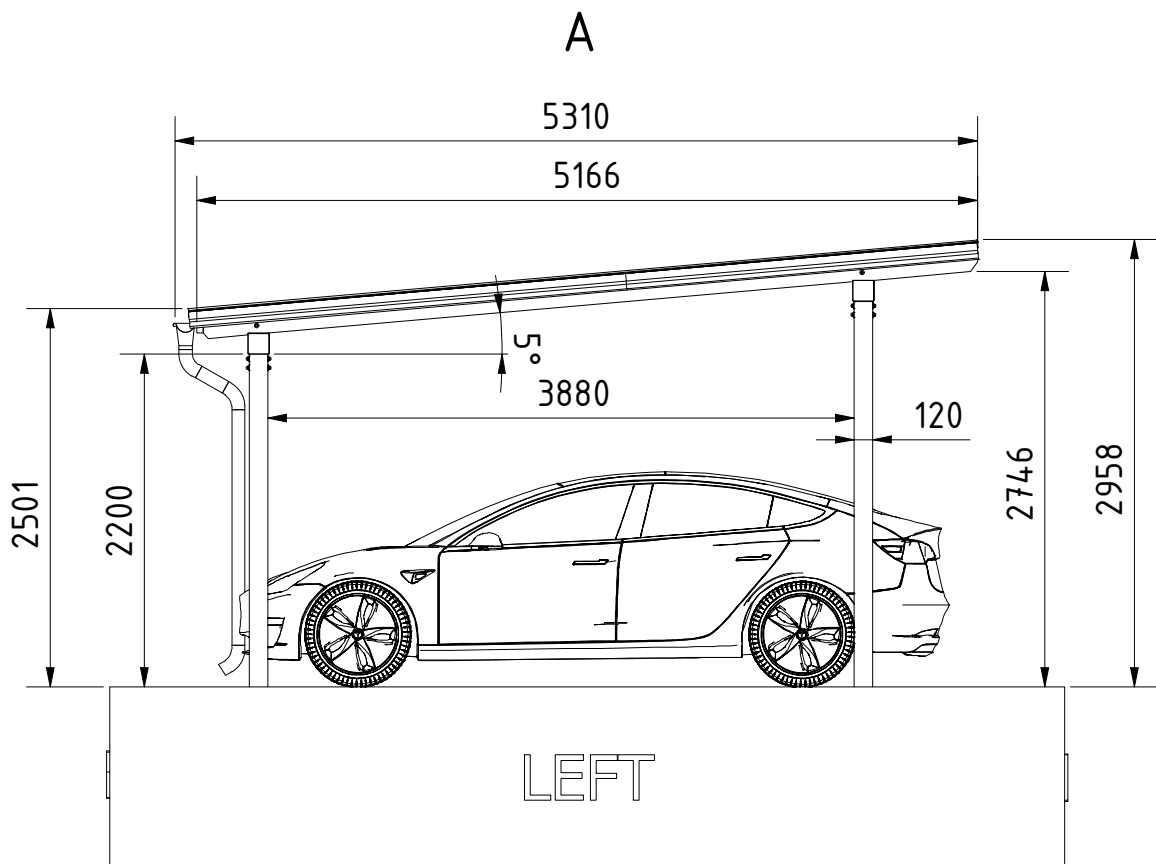
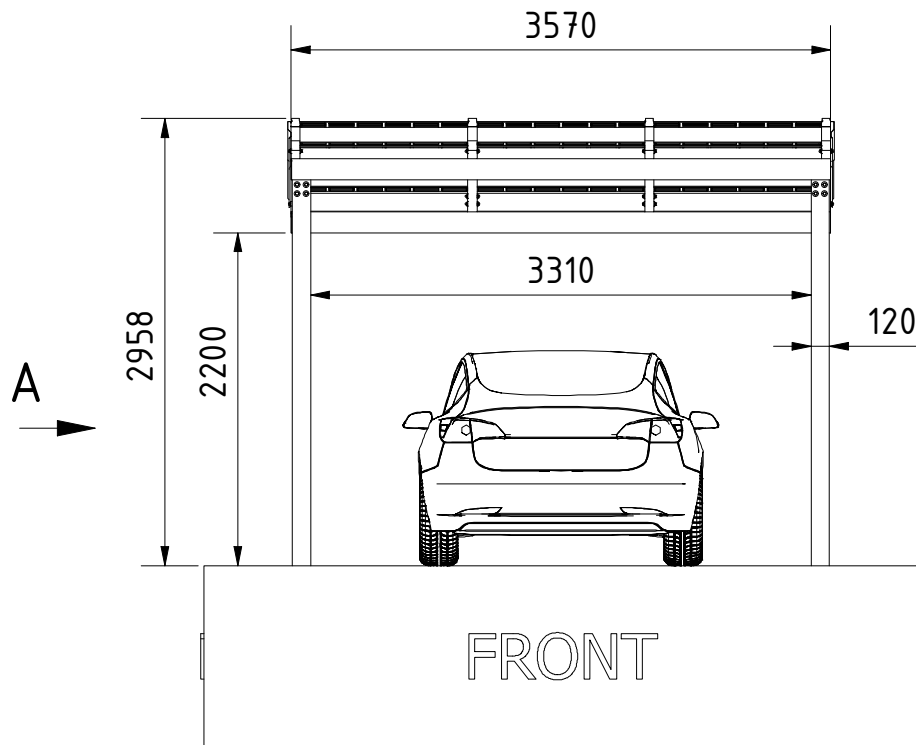
- Modern carport with integrated solar panels
- Distinctive design for contemporary homes
- Frameless transparent solar modules
- Higher power plant efficiency with dual-sided technology
- Steel - Glulam construction
- Steel (Powder coating)
- Glulam (Triple-layer high-quality structural coating)

Solar Panels  
SOLID-B108-435W



Transparent, dual-sided, frameless  
glass-glass solar modules

Carport "ePIT-H435-9BFT3-5-120"  
(Dimensions: Width x Depth) 357x517 cm



# Carport "ePIT-H435-9BFT3-5-120" 357x517 cm.

## Carport Specifications

|                                                 |                                                        |
|-------------------------------------------------|--------------------------------------------------------|
| Construction Material:                          | Steel - Glulam                                         |
| <b>Color*</b>                                   | Anthracite (steel) - White (glulam)                    |
| <b>Coating*</b>                                 | Powder coating (steel) - Triple-layer coating (glulam) |
| Dimensions (Width x Depth mm)                   | 3570x5166 mm                                           |
| <b>Depth between pole centers (foundation)*</b> | 4000 mm                                                |
| Width between pole centers (foundation)         | 3430 mm                                                |
| Total depth                                     | 5166 mm                                                |
| Total width                                     | 3570 mm                                                |
| Height at the front                             | 2958 mm                                                |
| Height at the rear                              | 2501 mm                                                |
| Entry height                                    | 2550 mm                                                |
| <b>Rear beam height*</b>                        | 2200 mm                                                |
| Roof type                                       | Single-pitch                                           |
| <b>Slope*</b>                                   | 5°                                                     |
| Covering                                        | Frameless solar panels (laminated glass-glass)         |
| Roof panels color                               | Black cells - transparency 10%                         |
| Panels thickness                                | 7,1 mm                                                 |
| Roof area                                       | 18,69 m2                                               |
| Slope direction                                 | Front to back                                          |
| <b>Overhang at the front *</b>                  | 676 mm                                                 |
| <b>Overhang at the back *</b>                   | 350 mm                                                 |
| <b>Overhang at the left side *</b>              | 10 mm                                                  |
| <b>Overhang at the right side *</b>             | 10 mm                                                  |
| Coverage area                                   | 18,44 m2                                               |
| <b>Column size*</b>                             | 120x120 mm (Material - Steel)                          |
| Number of columns                               | 4 pcs                                                  |
| Snow load (Sk)                                  | 1.6 kN/m2 (compliant with LT-EN1991-1-3)               |
| Wind load m/s                                   | 32 m/s (compliant with LT-EN1991-1-4)                  |
| Installation type                               | Free-standing                                          |
| Package weight                                  | 598 kg                                                 |
| Construction volume                             | 50,3 m3                                                |
| Article no.                                     | ET395120400022001601401403502027                       |

*\* - Parameters that can be changed*